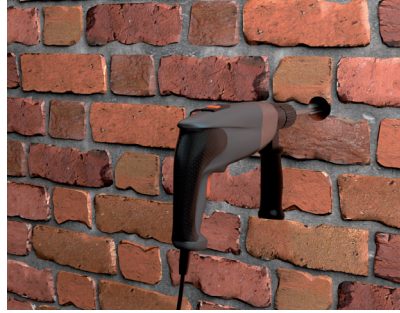
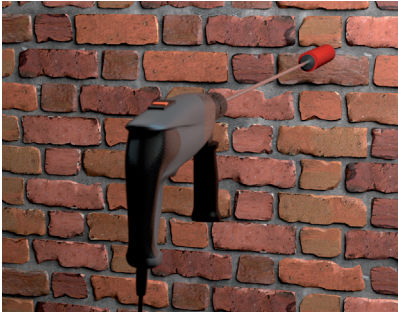


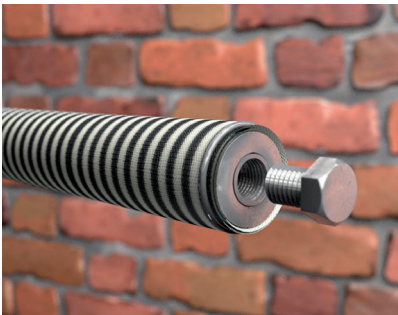
HEAVY DUTY INJECTION SOCK ANCHOR METHOD STATEMENT



1. Mark the entry points as specified by the engineer and drill to the correct length using either a core drill or an SDS Max hammer drill.



2. Ensure all debris is removed from the holes using a suitable air pump, then spray with clean water to maximise grout adhesion, and facilitate a gradual and even cure.



3. Screw the blanking plug into the end of the first HDS anchor, then insert into the hole. Additional component lengths are then added by simply screwing them together.



4. Once the required length is achieved, fit the supplied hose.

5. To mix the grout, add the appropriate amount of water first, then the powder and mix well using a paddle, until a very fluid but creamy uniform consistency is created. Always maintain the correct working ratio as per the manufacturer's instructions.

CONSTRUCTION PRODUCTS SOLUTIONS INTERNATIONAL LTD.

Unit 3, Haslemere Industrial Estate, Pig Lane, Bishop's Stortford, Hertfordshire. CM23 3HG. United Kingdom.
Tel: +44(0)1279 505 514 - Fax: +44(0)1279 755190 - e mail: info@surecps-group.com - www.surecps-group.com
Company Reg. 6969591 VAT Reg. GB 824 4246 40



Please always wear the appropriate safety and protective clothing when installing fixing and anchor products. Always observe the necessary Health & Safety guidelines.

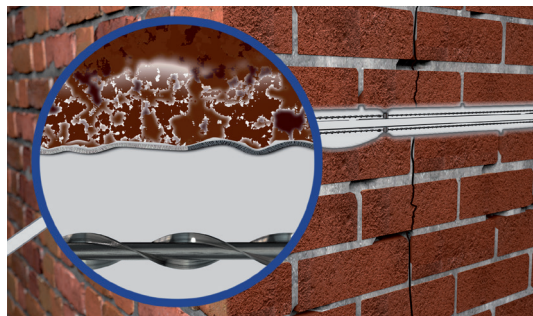
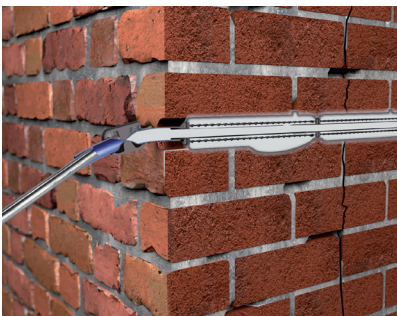
© All text copyright. Above information is given as guidance only and should always be verified by a suitable engineer.

The above information is given in good faith, and may be subject to alteration at any time without prior notification.

HEAVY DUTY INJECTION SOCK ANCHOR METHOD STATEMENT



6. Pour the mix into a pneumatic grout gun connected to a compressor set to a maximum of 3 bar pressure.
7. Once ready to fill, slip a clamp over the exposed hose, then push fit the steel pipe into the open end. Switch on the compressor and proceed with pumping.
8. The HDS Sock Anchor system is back-filled, expanding the reinforced mesh sock to completely fill any voids, providing a permanent cementitious fixing to the surrounding masonry.



9. When the sock has been fully inflated, milk grout gently runs from the anchor indicating that it's full.
10. Maintaining the pressure at this stage forces the milk grout further into the surrounding material and minimises shrinkage. As it cures, the high-performance grout firmly secures the helical bars to create a single structural entity that resists shear, compressive and tensile forces.
11. After a few minutes, fasten the clamp before turning off the compressor. It is advisable to remove the hose from the threaded tube 2-3 hours after installation. Wash any excess grout off with clean water, then fill the holes with SureFill flexible pointing mortar and colour match the masonry with SureStain.

CONSTRUCTION PRODUCTS SOLUTIONS INTERNATIONAL LTD.

Unit 3, Haslemere Industrial Estate, Pig Lane, Bishop's Stortford, Hertfordshire. CM23 3HG. United Kingdom.
Tel: +44(0)1279 505 514 - Fax: +44(0)1279 755190 - e mail: info@surecps-group.com - www.surecps-group.com
Company Reg. 6969591 VAT Reg. GB 824 4246 40



Please always wear the appropriate safety and protective clothing when installing fixing and anchor products. Always observe the necessary Health & Safety guidelines.

© All text copyright. Above information is given as guidance only and should always be verified by a suitable engineer.

The above information is given in good faith, and may be subject to alteration at any time without prior notification.