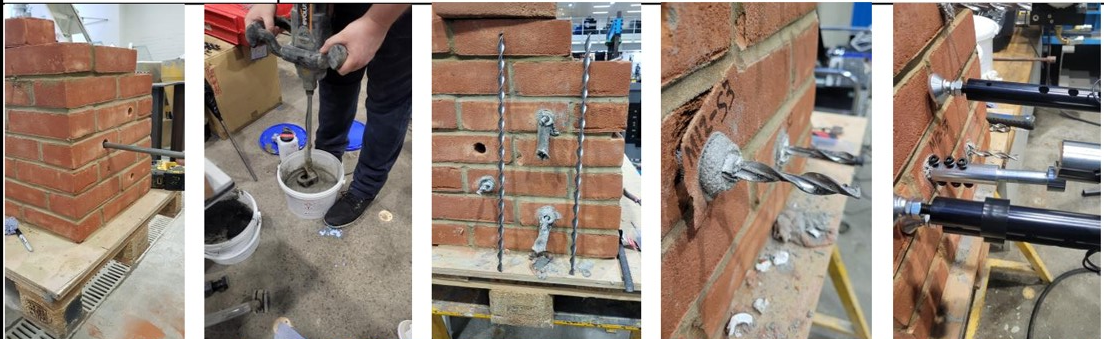


Pull-out Tests on CPS Helix Ties TC12 Sock anchor in Brickwork

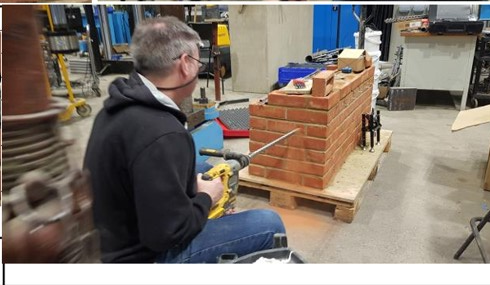
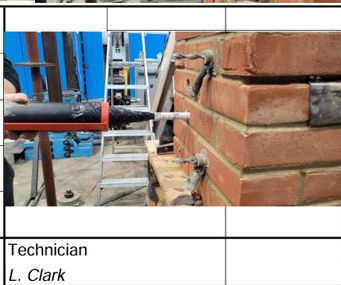
Anchor type : <b>Helix Ties TC12</b>	Date : 29/04/2023	Test No.: TC12-T1 to T6	No.of Tests <b>6</b>	<b>Pullout Tests on TC12 In Brickwork</b>
---	----------------------	----------------------------	-------------------------	---

Pull-out Test Helix Ties TC12 Sock anchor in Brickwork

TC12-T



Helix core dia.	$d_{cut, m} = 11.70\text{mm}$
Helix thickness	$t_{ef} = 1.6\text{mm}$
Helix pitch	$h = 32.5\text{mm}$
Total length	$L = 500\text{mm}$
Cavity length	$L_c = 500\text{mm}$
Research Engineer <i>S. Popo-Ola</i>	Technician <i>L. Clark</i>



Test Number	T1	T2	T3	T4	T5	T6	$F_{ut}(\text{mean})$ kN	9.10
Extension at failure (mm)							$\sigma(F_{ut})$ kN	0.81
Ultimate Load (kN)	9.50	9.80	10.00	9.00	8.20	8.10	$\nu(F_{ut})$ (%)	8.90%
Failure mode :	P	P	BC	P	P	P	Pull-out, Brickcone failure in tension	